



## Monday 30th September

King Island Gallery [www.kingislandgallery.org](http://www.kingislandgallery.org)  
Edward St, Currie Wharf open 1-3pm ph: 6462 9000

King Island Dairy Cheese Store 10:30am-4:30pm; Ph (03) 6462 0947

Hawthorn Yoga Class @ 6:00pm - Woman's class located at the Currie school art centre  
-Men's class located at the Currie town hall

## Tuesday 1st October

The Top Shop: 2249 North Rd, Reekara; 9:30am-2:30pm; Visit Art Experience  
Ph: 0458 569 591

Currie Lighthouse Tours Bookings Essential ph:0459 477 282

King Island Museum open 2:00pm - 4:00pm

Small Business Month Opening Event @ Legs Cafe 6:00pm

## Wednesday 2nd October

King Island Gallery [www.kingislandgallery.org](http://www.kingislandgallery.org)  
Edward St, Currie Wharf open 1-3pm ph: 6462 9000

King Island Distillery Door Open 1-4pm Ph: 0488 243 377 Racecourse Rd

King Island Dairy Cheese Store 10:30am-4:30pm; Ph (03) 6462 0947

## Thursday 3rd October

King Island Gallery [www.kingislandgallery.org](http://www.kingislandgallery.org) Edward St, Currie Wharf open 1-3pm, Ph: 6462 1924

The Nursery and Florist Open 9:30am-3pm

Donut day - Fresh made specialty donuts every Thursday available at the King Island Bakehouse

King Island Museum open 2:00pm - 4:00pm

## Friday 4th October

CWA Shop; open; 11:30am -1:30pm: Ph: 0407 728 899

Wot's on the Rock - King Island Radio - 100.5 FM -tune in between 2pm-4pm.

King Island Gallery [www.kingislandgallery.org](http://www.kingislandgallery.org)  
Edward St, Currie Wharf 1pm-4pm, Ph: 6462 9000

King Island Dairy Cheese Store 10:30am-4:30pm; Ph (03) 6462 0947

The Nursery and Florist Open 9:30am-3pm

Hawthorn Yoga Class @ 5:30pm Mixed class located at the Currie school art's centre

## Saturday 5th October

King Island Gallery [www.kingislandgallery.org](http://www.kingislandgallery.org)  
Edward St, Currie Wharf 1pm-4pm, Ph: 6462 9000

Currie Lighthouse Tours Bookings Essential ph:0459 477 282

The Nursery and Florist Open 9:30am-1:30pm

King Island Museum open 2:00pm - 4:00pm

## Sunday 6th October

The Top Shop: 2249 North Rd, Reekara; 10am-4pm; Visit Art Experience  
Ph: 0458 569 591

King Island Gallery [www.kingislandgallery.org](http://www.kingislandgallery.org)  
Edward St, Currie Wharf 1pm-4pm, Ph: 6462 9000

King Island Distillery Door Open 10-4pm Ph: 0488 243 377 Racecourse Rd

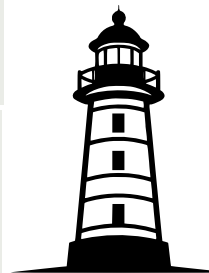
Currie Lighthouse Tours Bookings Essential ph:0459 477 282

King Island Dairy Cheese Store 11am-3pm ; Ph (03) 6462 0947

Platypus Tour Bookings Essential ph: 0 459 477 282 7am

King Island Museum open 2:00pm - 4:00pm

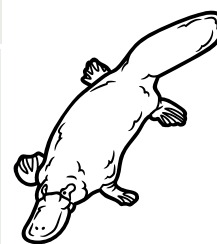
King Island Tourist Information Centre  
Located at KIRDO  
5 George Street, Currie, TAS  
Phone: 03 6462 1355  
Open 10am - 4pm Monday - Friday  
Open 10am - 12pm Saturday  
Closed Sunday



### Currie Lighthouse Tours

Bookings Essential

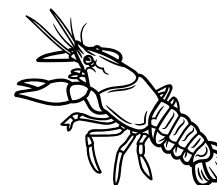
Join in and see some of the most amazing views across the Currie Harbour!!  
Call: 0459 477 282 to book



### Platypus Walk

Bookings Essential

Meet your friendly local guide and set off just after dawn for a trek to the hidden waterhole.  
Call: 0459 477 282 to book



### Crayfish Sales

- For fresh Crayfish you can pre-order from IGA or Foodworks, 24/hours Notice
- Crayfish cooked for you served at the King Island Hotel, & King Island Club with 24 hours notice
- Crayfish Pies Cooked or frozen available at the King Island Bakehouse

### See King Island with a local tour operator

- King Island Walks  
Ph: 0427 621 534
- King Island Coach Company  
Ph:0439 992 621
- King Island Pleasure Tours  
Ph: 0421 062 246
- King Island Tours  
Ph: 03 6461 1177
- Currie Lighthouse Tours  
Ph: 0459 477 282

Currie	Type of venue	Monday	Tuesday	Wednesday	Thursday	Friday	Saturday	Sunday
Island Sisters Driveway of 1 Racecourse Rd, Currie	Coffee van & light meals	Closed	Closed	7am - 2pm	7am - 2pm	7am - 2pm	8am - 2pm	Closed
King Island Bakehouse - 6462 1337 5 Main Street, Currie	Bakery & coffee	5am-5pm	5am-5pm	5am-5pm	5am-5pm	5am-5pm	6am-3pm	6am-3pm
King Island Club - 6462 1124 8 Netherby Road, Currie	Licensed club, book function at admin@kingisclub.com.au	Bar Open 12pm - Late	Bar open 12pm - Late	Bar open Kitchen open: 5-8pm	Bar open Kitchen open: 5-8pm	Bar open Kitchen open: 5-8pm	Bar open Kitchen open: 5-8pm	Bar open Kitchen open: 5-8pm
King Island Hotel - 6462 1633 Main Street, Currie	Restaurant/Bar, Crayfish also available, 24 notice for crayfish	10am-10pm	10am-10pm	10am-10pm	10am-10pm	10am-10pm	10am-10pm	10am-10pm
King Island Larder Edward st 0402 080 713	Coffee and light meals	7am-3pm	7am - 3pm	7am - 3pm	7am - 3pm	7am - 3pm	8am-2pm	8am-2pm
Legs Coffee Bar & Restaurant- 6462 1233 11-9 Main Street, Currie	Pizzeria - Text 0428621297 to Pre Order Pizza only open Friday & Saturday	Closed	Closed	Closed	8:30am - Late	8:30am - Late	8:30am - Late	8:30am - Late
Ocean Dunes Golf Course - 0448 544 653 365 North Rd, Loorana	Light snacks and coffee available Licensed	9am-4pm	9am-4pm	9am-4pm	9am-4pm	9am-4pm	9am-4pm	9am-4pm
View Dining 1 Owen Smith Drive 0461 505 504	Snacks and Meals	Closed	Closed	12pm-3pm 5:30pm-8pm	12pm-3pm 5:30pm-8pm	12pm-3pm 5:30pm-8pm	8am-11am 2pm-8pm	3pm-8pm
<b>South</b>								
Grassy Club - Grassy Road, Grassy call 0457 155 195 to book.	Licensed club	Dinner	Dinner	Dinner	Dinner	Dinner	Dinner	Dinner
Wild Harvest - 6461 1176 or 0408 546 469 4 Blue Gum Drive, Grassy	Restaurant Booking essential	Dinner	Dinner	Dinner	Dinner	Dinner	Dinner	Dinner
<b>North</b>								
Cape Wickham Golf course - 6463 1200 Wickham Road, Cape Wickham	Coffee & Bar	9am-4pm	9am-4pm	9am-4pm	9am-4pm	9am-4pm	9am-4pm	9am-4pm
<b>Self Catering</b>								
Foodworks - 6 Main Street, Currie	Supermarket & hampers upon request	7am-6pm	7am-6pm	7am-6pm	7am-6pm	7am-6pm	7am-6pm	7am-6pm
Grassy Supermarket - 2876 Grassy Road, Grassy	Supermarket	11am-5pm	11am-5pm	11am-5pm	11am-5pm	11am-5pm	11am-5pm	11am-5pm
IGA - 8-10 Main Street, Currie	Supermarket & hampers upon request	7am-6pm	7am-12pm	7am-6pm	7am-6pm	7am-6pm	7am-6pm	7am-6pm
King Island Meat Proviadore - 5A Main Street, Currie	Butchery	9am-6pm	9am-6pm	9am-6pm	9am-5pm	9am-5pm	Closed	Closed
The Boathouse BYO food Access via end of Lighthouse Street, Currie	Community venue, Call Caroline 0429 621 180	Open	Open	Open	Open	Open	Open	Open
<b>Other venues</b>								
King Island Brewhouse - 0455 666 138 36 Lancaster Road, Peparah	Tastings & Tours <a href="https://kibrew.house/">https://kibrew.house/</a> , Meat packs available for BBQ Fri-Sun.	Closed	Closed	Closed	1-6pm	1-6pm	1-6pm	1-6pm
King Island Dairy (cheese store) - 6462 0947 North Road, Loorana	Tastings & Store	10:30am-4pm	Closed	10:30am-4pm	Closed	10:30am-4pm	Closed	11am-3pm
King Island Distillery - 0488 243 377 or <a href="mailto:heidt@kingislanddistillery.com">heidt@kingislanddistillery.com</a> 1 Racecourse Road, Currie	Tastings & Tours <a href="https://kingislanddistillery.com/">https://kingislanddistillery.com/</a>	by appointment	by appointment	Distillery Door 1pm-4pm	by appointment	by appointment	by appointment	Distillery Door 10am-4pm