



Monday 4th November

King Island Dairy Cheese Store 10:30am-4:30pm; Ph (03) 6462 0947

Hawthorn Yoga Class @ 6:00pm - Woman's class located at the Currie school art centre
-Men's class located at the Currie town hall

Recreation Day - Hours may differ

Tuesday 5th November

The Top Shop: 2249 North Rd, Reekara; 9:30am-2:30pm; Visit Art Experience
Ph: 0458 569 591

Currie Lighthouse Tours Bookings Essential ph:0459 477 282

King Island Museum open 2:00pm - 4:00pm

Wednesday 6th November

King Island Distillery Door Open 1-4pm Ph: 0488 243 377 Racecourse Rd

King Island Dairy Cheese Store 10:30am-4:30pm; Ph (03) 6462 0947

Thursday 7th November

King Island Gallery www.kingislandgallery.org Edward St, Currie Wharf open 1-3pm, Ph: 6462 1924

The Nursery and Florist Open 9:30am-3pm

Donut day - Fresh made specialty donuts every Thursday available at the King Island Bakehouse

King Island Museum open 2:00pm - 4:00pm

Friday 8th November

CWA Shop; open; 10pm - 1pm: Ph: 0407 728 899

Wot's on the Rock - King Island Radio - 100.5 FM -tune in between 2pm-4pm.

King Island Gallery www.kingislandgallery.org
Edward St, Currie Wharf 1pm-4pm, Ph: 6462 9000

King Island Dairy Cheese Store 10:30am-4:30pm; Ph (03) 6462 0947

The Nursery and Florist Open 9:30am-3pm

Hawthorn Yoga Class @ 5:30pm Mixed class located at the Currie school art's centre

King Island Brewhouse Open 1pm - 10pm Pizza's Available from 5:30pm -
Call to Book your pizza 0428 133 319

Saturday 9th November

King Island Gallery www.kingislandgallery.org
Edward St, Currie Wharf 1pm-4pm, Ph: 6462 9000

Currie Lighthouse Tours Bookings Essential ph:0459 477 282

The Nursery and Florist Open 9:30am-1:30pm

King Island Museum open 2:00pm - 4:00pm

Sunday 10th November

The Top Shop: 2249 North Rd, Reekara; 10am-4pm; Visit Art Experience
Ph: 0458 569 591

King Island Gallery www.kingislandgallery.org
Edward St, Currie Wharf 1pm-4pm, Ph: 6462 9000

King Island Distillery Door Open 10-4pm Ph: 0488 243 377 Racecourse Rd

Currie Lighthouse Tours Bookings Essential ph:0459 477 282

King Island Dairy Cheese Store 10:30am-4:30pm ; Ph (03) 6462 0947

Platypus Tour Bookings Essential ph: 0 459 477 282 7am

King Island Museum open 2:00pm - 4:00pm

King Island Tourist Information Centre
Located at KIRDO
5 George Street, Currie, TAS
Phone: 03 6462 1355
Open 10am - 4pm Tuesday - Friday
Open 10am - 12pm Saturday
Closed Sunday

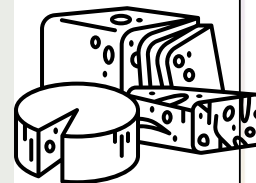


**Currie Lighthouse
Tours**

Bookings Essential

Join in and see
some of the most
amazing views
across the Currie
Harbour!!

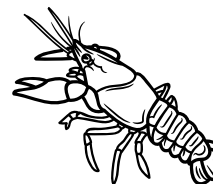
Call: 0459 477
282 to book



**King Island Dairy
Cheese Shop**

Go enjoy some world
famous King Island
cheese with cheese
tastings from
10:30am - 4:00pm

Shop Open Monday,
Wednesday, Friday &
Sunday from 10:30am
- 4:30pm



Crayfish Sales

- Crayfish season is currently closed for the season, starts back up in November
- Crayfish cooked for you served at the King Island Hotel, 24 hours notice
- Crayfish Pies Cooked or frozen available at the King Island Bakehouse

See King Island with a local tour operator

- King Island Walks
Ph: 0427 621 534
- King Island Coach Company
Ph:0439 992 621
- King Island Pleasure Tours
Ph: 0421 062 246
- King Island Tours
Ph: 03 6461 1177
- Currie Lighthouse Tours
Ph: 0459 477 282

| Currie | Type of venue | Monday | Tuesday | Wednesday | Thursday | Friday | Saturday | Sunday |
|---|---|----------------------|------------------------|---------------------------------|---------------------------------|---------------------------------|---------------------------------|---------------------------------|
| Island Sisters Driveway of 1 Racecourse Rd, Currie | Coffee van & light meals | Closed | Closed | 7am - 2pm | 7am - 2pm | 7am - 2pm | 8am - 2pm | Closed |
| King Island Bakehouse - 6462 1337 5 Main Street, Currie | Bakery & coffee | 5am-5pm | 5am-5pm | 5am-5pm | 5am-5pm | 5am-5pm | 6am-3pm | 6am-3pm |
| King Island Club - 6462 1124 8 Netherby Road, Currie | Licensed club, book function at admin@kingisclub.com.au | Bar Open 12pm - Late | Bar open 12pm - Late | Bar open Kitchen open: 5-8pm | Bar open Kitchen open: 5-8pm | Bar open Kitchen open: 5-8pm | Bar open Kitchen open: 5-8pm | Bar open Kitchen open: 5-8pm |
| King Island Hotel - 6462 1633 Main Street, Currie | Restaurant/Bar, Crayfish also available, 24 notice for crayfish | 10am-10pm | 10am-10pm | 10am-10pm | 10am-10pm | 10am-10pm | 10am-10pm | 10am-10pm |
| King Island Larder Edward st 0402 080 713 | Coffee and light meals | 7am-3pm | 7am - 3pm | 7am - 3pm | 7am - 3pm | 7am - 3pm | 8am-2pm | 8am-2pm |
| Legs Coffee Bar & Restaurant- 6462 1233 11-9 Main Street, Currie | Pizzeria - Text 0428621297 to Pre Order Pizza only open Friday & Saturday | Closed | Closed | Closed | 8:30am - Late | 8:30am - Late | 8:30am - Late | 8:30am - Late |
| Ocean Dunes Golf Course - 0448 544 653 365 North Rd, Loorana | Light snacks and coffee available Licensed | 9am-4pm | 9am-4pm | 9am-4pm | 9am-4pm | 9am-4pm | 9am-4pm | 9am-4pm |
| View Dining 1 Owen Smith Drive 0461 505 504 | Snacks and Meals | Closed | 12pm-3pm 5:30pm-8pm | 12pm-3pm 5:30pm-8pm | Closed | 12pm-3pm 5:30pm-8pm | 8am-11am 2pm-8pm | 5:30pm - 8pm |
| South | | | | | | | | |
| Grassy Club - Grassy Road, Grassy call 0457 155 195 to book. | Licensed club | 5:30pm-7:30pm | 5:30pm-7:30pm | 5:30pm-7:30pm | 5:30pm-7:30pm | 5:30pm-7:30pm | 5:30pm-7:30pm | 5:30pm-7:30pm |
| Wild Harvest - 6461 1176 or 0408 546 469 4 Blue Gum Drive, Grassy | Restaurant Booking essential | Reservation Only | Reservation Only | Reservation Only | Reservation Only | Reservation Only | Reservation Only | Reservation Only |
| North | | | | | | | | |
| Cape Wickham Golf course - 6463 1200 Wickham Road, Cape Wickham | Coffee & Bar | 9am-4pm | 9am-4pm | 9am-4pm | 9am-4pm | 9am-4pm | 9am-4pm | 9am-4pm |
| Self Catering | | | | | | | | |
| Foodworks - 6 Main Street, Currie | Supermarket & hampers upon request | 7am-6pm | 7am-6pm | 7am-6pm | 7am-6pm | 7am-6pm | 7am-6pm | 7am-6pm |
| Grassy Supermarket - 2876 Grassy Road, Grassy | Supermarket | 11am-5pm | 11am-5pm | 11am-5pm | 11am-5pm | 11am-5pm | 11am-5pm | 11am-5pm |
| IGA - 8-10 Main Street, Currie | Supermarket & hampers upon request | 7am-6pm | 7am-12pm | 7am-6pm | 7am-6pm | 7am-6pm | 7am-6pm | 7am-6pm |
| King Island Meat Proviadore - 5A Main Street, Currie | Butchery | 9am-6pm | 9am-6pm | 9am-6pm | 9am-5pm | 9am-5pm | Closed | Closed |
| The Boathouse BYO food Access via end of Lighthouse Street, Currie | Community venue, Call Caroline 0429 621 180 | Open | Open | Open | Open | Open | Open | Open |
| Other venues | | | | | | | | |
| King Island Brewhouse - 0455 666 138 36 Lancaster Road, Peparah | Tastings & Tours https://kibrew.house/ , Meat packs available for BBQ Fri-Sun. | Closed | Closed | Closed | 1-6pm | 1-10pm | 1-6pm | 1-6pm |
| King Island Dairy (cheese store) - 6462 0947 North Road, Loorana | Tastings & Store | 10:30am-4:30pm | Closed | 10:30am-4:30pm | Closed | 10:30am-4:30pm | Closed | 10:30am-4:30pm |
| King Island Distillery - 0488 243 377 or heidid@kingislanddistillery.com 1 Racecourse Road, Currie | Tastings & Tours https://kingislanddistillery.com/ | by appointment | by appointment | Distillery Door 1pm-4pm | by appointment | by appointment | by appointment | Distillery Door 10am-4pm |